

FOR LEASE

CLASS A OFFICE SPACE

1120 ROUTE 73, MT. LAUREL, NJ

1120 EXECUTIVE PLAZA



PROPERTY SUMMARY

Class "A" Professional Office Space available for lease at 1120 Executive Plaza, conveniently located on Route 73 in Mount Laurel. Features card-access to the building, high-end finishes throughout, a beautiful atrium lobby, a Fitness Center available to all tenants, and on-site parking at a ratio of 3.96/1,000 SF. Offering high visibility from one of the area's most heavily-travelled highways, 1120 Executive Plaza provides convenient, direct access to Rt. 38, I-295 (Exit 36) and the NJ Turnpike (Exit 4), and is also adjacent to an extensive range of Hotel, Dining and Retail Amenities.



- + Total SF: ±97,790 SF
- + Available: First Floor: ±1,486 SF
Fourth Floor: ±5,313 SF



CONTACT US

JON C. SARKISIAN

Executive Vice President
+1 856 359 9408
jon.sarkisian@cbre.com
Licensed Broker-Salesperson: NJ
Licensed: PA

BRIAN SAGGIOMO

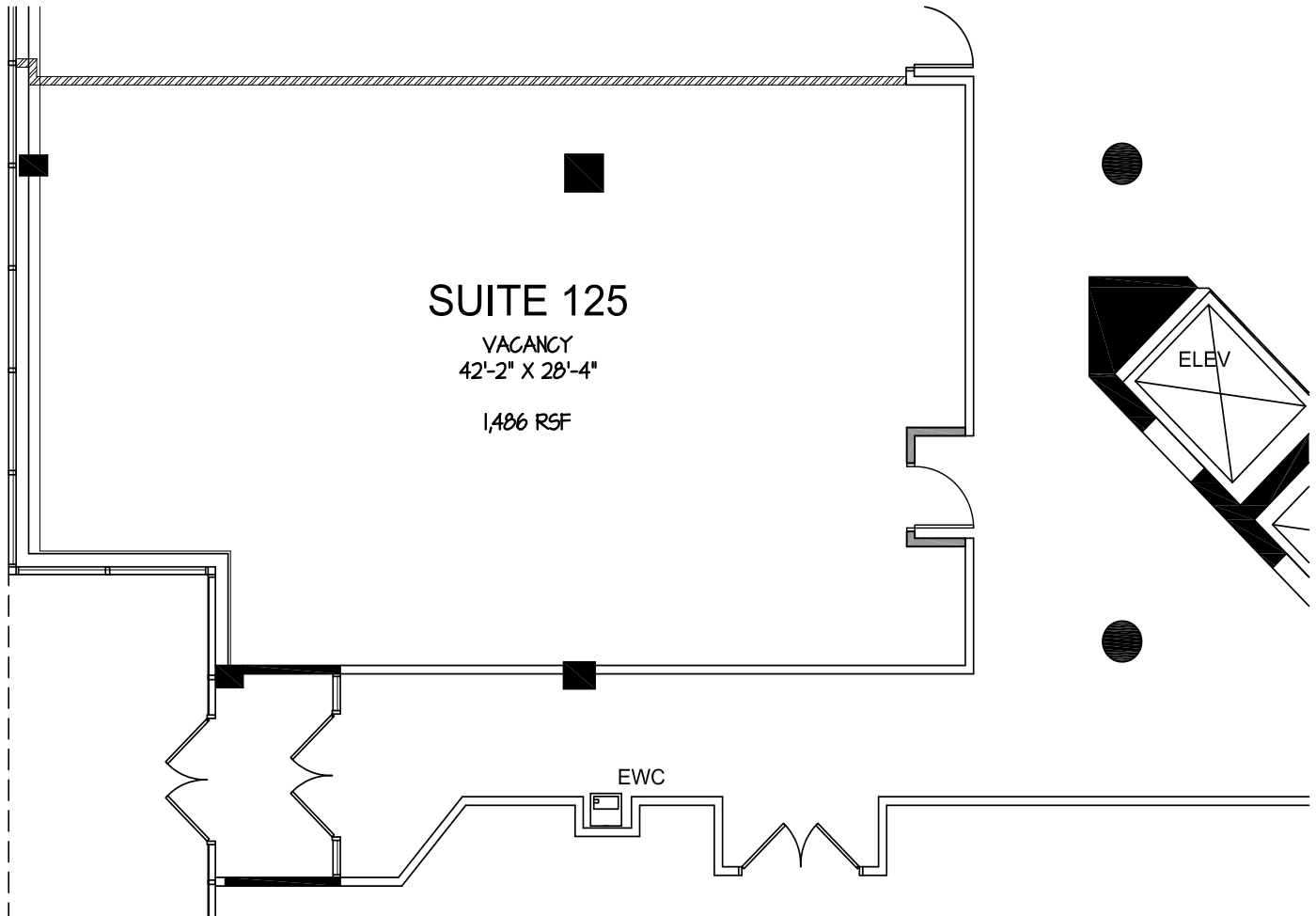
Vice President
+1 856 359 9407
brian.saggiomo@cbre.com
Licensed Broker-Salesperson: NJ
Licensed: PA

CBRE, INC.

1000 Howard Boulevard, Suite 104
Mt. Laurel, NJ 08057
+1 856 359 9500
www.cbre.com
Licensed Real Estate Broker

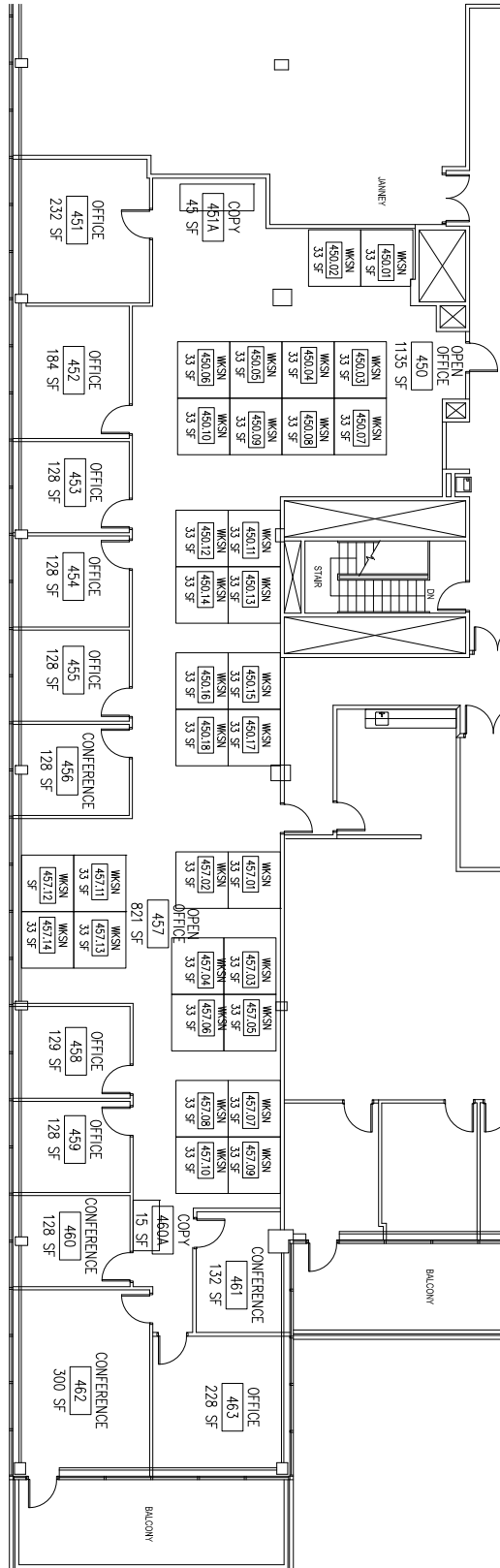
1120 ROUTE 73, MT. LAUREL, NJ

1ST FLOOR



1120 ROUTE 73, MT. LAUREL, NJ

4TH FLOOR



1120 ROUTE 73, MT. LAUREL, NJ

AMENITIES MAP



© 2017 CBRE, Inc. All rights reserved. This information has been obtained from sources believed reliable, but has not been verified for accuracy or completeness. You should conduct a careful, independent investigation of the property and verify all information. Any reliance on this information is solely at your own risk.



CONTACT US

JON C. SARKISIAN

Executive Vice President
+1 856 359 9408
jon.sarkisian@cbre.com
Licensed Broker-Salesperson: NJ
Licensed: PA

BRIAN SAGGIOMO

Vice President
+1 856 359 9407
brian.saggiomo@cbre.com
Licensed Broker-Salesperson: NJ
Licensed: PA

CBRE, INC.

1000 Howard Boulevard, Suite 104
Mt. Laurel, NJ 08057
+1 856 359 9500
www.cbre.com
Licensed Real Estate Broker